

February 2010 U.S. Port Rankings

For the fourth straight month (after sixteen months of declines), total US containerized trade increased and was up 19% for February, following a 10% increase in January. Imports were up for the third straight month (+18%), as retailers replenished depleted inventories. Exports were up for the fifth straight month (+19%).

Savannah held the fourth spot for the month and was the fastest growing U.S. port (in absolute terms) on the East Coast, growing 16% (+21,564 TEUs) to 157,897 TEUs for loaded containers and increased its East Coast Market Share by 1.3%. Savannah's increase was its fifth straight month for positive growth. Norfolk (+15%) took the fifth spot ahead of Oakland (+20%), Houston (+9%), Seattle (+62%), Charleston (+5%), and Tacoma (-3%).

For the fourth straight month, the West Coast posted positive growth (+31%) and increased at a faster pace than the East coast (+8%). LB (+41%), LA (+29%), Seattle (+62%), and Oakland (+20%) grew on both imports and exports. Container volume on the East Coast grew the second fastest in absolute terms, as Savannah (+16%), NY/NJ (+7%), and Norfolk (+15%) led the East Coast in growth. The Gulf Coast increased 12%, mostly due to Houston (+9%) and New Orleans (+44%).

	TOTAL TEU TRADE			YTD Market Share		TOTAL TEU TRADE		Feb. 2010	Market Share	
	YTD 2009	YTD 2010	Growth	YTD 2009	YTD 2010	Feb-09	Feb-10	YOY	Feb-09	Feb-10
TOTAL U.S.	3,571,117	4,075,136	14.1%	100.0%	100.0%	1,686,674	1,999,687	18.6%	100.0%	100.0%
WEST COAST	1,711,131	2,032,406	18.8%	47.9%	49.9%	760,730	993,237	30.6%	45.1%	49.7%
LA	702,662	817,047	16.3%	41.1%	40.2%	306,875	395,400	28.8%	40.3%	39.8%
LB	507,519	638,502	25.8%	29.7%	31.4%	226,941	320,869	41.4%	29.8%	32.3%
OAK	191,380	215,602	12.7%	11.2%	10.6%	87,343	104,397	19.5%	11.5%	10.5%
SEA	137,865	201,655	46.3%	8.1%	9.9%	60,118	97,408	62.0%	7.9%	9.8%
TAC	133,159	122,775	-7.8%	7.8%	6.0%	59,101	57,152	-3.3%	7.8%	5.8%
EAST COAST	1,583,815	1,732,356	9.4%	44.4%	42.5%	786,840	850,622	8.1%	46.7%	42.5%
NY	521,357	579,386	11.1%	32.9%	33.4%	263,259	282,729	7.4%	33.5%	33.2%
SAVANNAH	281,096	332,501	18.3%	17.7%	19.2%	136,333	157,897	15.8%	17.3%	18.6%
NOR	207,853	227,923	9.7%	13.1%	13.2%	104,627	120,220	14.9%	13.3%	14.1%
CHA	161,834	164,436	1.6%	10.2%	9.5%	78,812	82,441	4.6%	10.0%	9.7%
MIA	97,595	110,716	13.4%	6.2%	6.4%	48,197	53,787	11.6%	6.1%	6.3%
PT EVER	89,301	88,190	-1.2%	5.6%	5.1%	44,026	44,313	0.7%	5.6%	5.2%
JAX	27,568	35,758	29.7%	1.7%	2.1%	14,213	15,975	12.4%	1.8%	1.9%
WILM NC	22,101	25,528	15.5%	1.4%	1.5%	9,874	12,147	23.0%	1.3%	1.4%
GULF COAST	276,171	310,373	12.4%	7.7%	7.6%	139,104	155,828	12.0%	8.2%	7.8%
HOU	184,911	203,573	10.1%	67.0%	65.6%	92,353	100,869	9.2%	66.4%	64.7%
NEW ORL	29,767	42,755	43.6%	10.8%	13.8%	13,978	20,070	43.6%	10.0%	12.9%
MOBILE	11,069	10,903	-1.5%	4.0%	3.5%	6,217	6,257	0.6%	4.5%	4.0%
TAMPA	10,090	5,600	-44.5%	3.7%	1.8%	5,393	2,630	-51.2%	3.9%	1.7%

Source for table: Feb U.S. Port Rankings-Journal of Commerce

Note: Piers numbers for Feb. are 2% below our internal numbers for loaded cargo. This table does not reflect cargo to/from Puerto Rico.

For the Observed Port Range (NFK to MIA)

Imports

Mid & South Atlantic Market Share for Feb. 2010

- Savannah: **+1.0%** from 31.0% in Feb. 2009 to **32.0%** in Feb. 2010
- Charleston: **-0.8%** from 18.5% in Feb. 2009 to **17.7%** in Feb. 2010
- Norfolk: **+1.8%** from 23.2% in Feb. 2009 to **25.0%** in Feb. 2010
- Pt Everglades: **-0.2%** from 7.9% in Feb. 2009 to **7.7%** in Feb. 2010

- Miami: **+0.7 %** from 9.6% in Feb. 2009 to **10.3%** in Feb. 2010
- Jacksonville: **-2.5%** from 6.0% in Feb. 2009 to **3.5%** in Feb. 2010
- Wilmington, NC: **+0.4%** from 2.6% in Feb. 2009 to **3.0%** Feb. 2010

Volume Growth

For the observed port range (port range) in Feb 2010, the average growth rate for imports to the port range was up 1%.

Savannah's growth rate was up for the third straight month (after fourteen consecutive months of declines), increasing 4% (+3,102 TEUs) overall for February imports. Savannah grew 29% (+964 TEUs) with Southern Asia (mostly Rugs, Sheets, & Towels) and gained 2.9% market share from Charleston. Savannah also was up 8% (+655 TEUs) with SE Asia (mostly Furniture), 207% (+466 TEUs) with Central America (mostly Apparel), 9% (+463 TEUs) with North Europe (mostly Beverages), and 1% (+423 TEUs) with NE Asia (mostly Machinery, Appliances, and Electronics). Savannah saw more imports via OOCL (from Southern Asia), MSC (from SE Asia and North Europe), Maersk (from Central America and NE Asia), and Yang Ming (from NE Asia).

Norfolk increased the most (in absolute terms) out of the port range and grew 9% (+4,725 TEUs) and increased 11% (+2,370 TEUs) with NE Asia (mostly Machinery/Appliances/Electronics and Toys) and gained 2.1% market share from Savannah and Charleston. Norfolk also increased 27% (+929 TEUs) with SE Asia (mostly Furniture), 18% (+834 TEUs) with Southern Asia (mostly Rugs, Sheets, Towels, and Blankets), and 8% (+797 TEUs) with North Europe (mostly Minerals). Norfolk had increased imports with China Shipping (from NE Asia), Yang Ming Line (from NE Asia) Hanjin (from SE Asia), NYK (from Southern Asia and North Europe), and MSC (from North Europe).

Miami grew 8% (+1,752 TEUs) and increased 17% (+1,233 TEUs) with NE Asia (mostly Machinery/Appliances/Electronics and Furniture). Miami also increased 54% (+745 TEUs) with SE Asia (mostly Furniture). The port increased imports with Maersk (from NE Asia and SE Asia) and Evergreen (from NE Asia and SE Asia).

Wilmington, NC increased 15% (+884 TEUs) and grew +1,347 TEUs with North Europe (mostly Chemicals) and had increased imports with Independent Container Line. Conversely, the port was down 16% (-861 TEUs) with NE Asia (mostly Machinery via Hanjin and Yang Ming).

Charleston was down 3% (-1,269 TEUs) and decreased 71% (-1,008 TEUs) with Central America (mostly Apparel) and lost 5.5% market share, mostly to Savannah (especially with Maersk). Charleston also was down 6% (-822 TEUs) with NE Asia (mostly Furniture and Retail Goods) and had less imports with Maersk and CMA CGM. Conversely, the port was up 7% (+933 TEUs) with North Europe (mostly Automotive) and had increased imports with MSC and Hamburg Sud.

Jacksonville was down 42% (-5,791 TEUs), mostly due to a decrease of 66% (-4,952 TEUs) with Puerto Rico (mostly Retail Goods and Food-Vegetables) and had less imports with Horizon Lines.

Exports

Mid & South Atlantic Market Share for Feb. 2010

- Savannah: **+2.6%** from 25.9% in Feb. 2009 to **28.5%** in Feb. 2010
- Charleston: **-0.8%** from 14.8% in Feb. 2009 to **14.0%** in Feb. 2010
- Norfolk: **+1.4%** from 19.8% in Feb. 2009 to **21.2%** in Feb. 2010
- Pt Everglades: **-1.2%** from 10.5% in Feb. 2009 to **9.3%** in Feb. 2010
- Miami: **-0.6%** from 10.7% in Feb. 2009 to **10.1%** in Feb. 2010
- Jacksonville: **-0.7%** from 13.4% in Feb. 2009 to **12.7%** in Feb. 2010
- Wilmington, NC: **-0.6%** from 1.5% in Feb. 2009 to **0.9%** in Feb. 2010

Volume Growth

For the fifth straight month (after fifteen months of negative growth), the average rate of growth for exports from the port range grew and was up 18%.

For the fifth straight month, **Savannah** posted double digit growth and was up 29% (+18,922 TEUs), which was the highest growth rate in absolute terms for the port range. Savannah was up 20% (+4,732 TEUs) to NE Asia (mostly Clay), 101% (+4,329 TEUs) to SE Asia (mostly Food –Soybeans), 32% (+3,256 TEUs) to the Mediterranean (mostly Paper Waste), and 57% (+2,079 TEUs) to the Middle East (mostly Retail Goods, Auto, Apparel, and Wood Pulp). Savannah saw increased exports with NYK (to NE and SE Asia), Yang Ming (to NE Asia), Hapag Lloyd (to NE Asia), CMA CGM (to NE Asia), Zim (to the Mediterranean), MSC (to the Mediterranean), and APL (to the Middle East).

Norfolk grew 26% (+12,912 TEUs) and was up 146% (+5,802 TEUs) with SE Asia (mostly Food-Soybeans), 41% (+4,879 TEUs) with NE Asia (mostly Food-Soybeans), and 94% (+2,412 TEUs) with Southern Asia (mostly Paper Products). Norfolk had increased exports with MSC (to SE Asia and Southern Asia), Evergreen Line (to NE Asia), and Hanjin (to NE Asia).

Charleston was up 11% (+4,180 TEUs) and increased 68% (+2,896 TEUs) with NE Asia (mostly Wood Pulp), 68% (+1,183 TEUs) with WCSA (mostly Chemicals), and 52% (+1,097 TEUs) with ECSA (mostly Chemicals). The port had increased exports with Evergreen (to NE Asia and WCSA), CMA CGM (to NE Asia) and Hamburg Sud (to ECSA).

Jacksonville grew 12% (+3,841 TEUs) and was up 5% (+1,306 TEUs) with Puerto Rico (mostly Retail Goods), 42% (+1,164 TEUs) with ECSA (mostly Retail Goods and Automotive), and 36% (+1,009 TEUs) with the Caribbean (mostly Food- Grocery Products and Retail Goods). The port had increased exports with Crowley (to Puerto Rico and the Caribbean) and Hamburg Sud (to ECSA).

Miami was up 11% (+2,954 TEUs) and grew 28% (+1,369 TEUs) with NE Asia (mostly Food- Grapefruit). The port had increased exports with APL to this trade region.

March 2010 U.S. Port Rankings

For the fifth straight month (after sixteen months of declines), total US containerized trade increased and was up 10% for March, following a 19% increase in February. Imports were up for the fourth straight month (+11%), but at a slower pace than February, during which Chinese factories closed for the Chinese New Year. Exports were up for the sixth straight month (+10%).

Savannah held the fourth spot for the month and was the second fastest growing U.S. port (in absolute terms), growing 23% (+32,392 TEUs) to 173,949 TEUs for loaded containers and increased its East Coast Market Share by 0.7%. Savannah's increase was its sixth straight month for positive growth. Norfolk (+16%) took the fifth spot for the month ahead of Houston (+14%), Oakland (+5%), Seattle (+44%), Charleston (+16%), and Tacoma (-22%).

For the fifth straight month, the West Coast posted positive growth (+4%), but grew the slowest in percentage terms. Seattle (+44%), LB (+9%), and Oakland (+5%) grew, as LA (-2%) and Tacoma (-22%) fell. Container volume on the East Coast grew the fastest, as NY/NJ (+20%), Savannah (+23%), Norfolk (+16%), Charleston (+16%), and Jacksonville (+36%) led the East Coast in growth. The Gulf Coast increased 14%, mostly due to Houston (+14%) and New Orleans (+59%).

	TOTAL TEU TRADE			YTD		Market Share		TOTAL TEU TRADE			Mar. 2010		Market Share	
	YTD 2009	YTD 2010	Growth	YTD 2009	YTD 2010	Mar-09	Mar-10	YOY	Mar-09	Mar-10				
TOTAL U.S.	5,557,181	6,270,126	12.8%	100.0%	100.0%	1,990,194	2,194,990	10.3%	100.0%	100.0%				
WEST COAST	2,715,096	3,073,081	13.2%	48.9%	49.0%	1,003,965	1,040,674	3.7%	50.4%	47.4%				
LA	1,113,925	1,221,061	9.6%	41.0%	39.7%	411,263	404,013	-1.8%	41.0%	38.8%				
LB	809,179	967,899	19.6%	29.8%	31.5%	301,660	329,397	9.2%	30.0%	31.7%				
OAK	303,737	333,802	9.9%	11.2%	10.9%	112,357	118,200	5.2%	11.2%	11.4%				
SEA	211,747	307,846	45.4%	7.8%	10.0%	73,882	106,191	43.7%	7.4%	10.2%				
TAC	215,917	187,470	-13.2%	8.0%	6.1%	82,758	64,695	-21.8%	8.2%	6.2%				
EAST COAST	2,403,928	2,702,385	12.4%	43.3%	43.1%	824,242	970,028	17.7%	41.4%	44.2%				
NY	790,704	902,778	14.2%	32.9%	33.4%	269,347	323,392	20.1%	32.7%	33.3%				
SAVANNAH	422,654	506,450	19.8%	17.6%	18.7%	141,558	173,949	22.9%	17.2%	17.9%				
NOR	319,848	357,269	11.7%	13.3%	13.2%	111,994	129,346	15.5%	13.6%	13.3%				
CHA	237,688	252,185	6.1%	9.9%	9.3%	75,854	87,748	15.7%	9.2%	9.0%				
MIA	146,053	168,356	15.3%	6.1%	6.2%	48,458	57,640	18.9%	5.9%	5.9%				
PT EVER	141,059	143,845	2.0%	5.9%	5.3%	51,757	55,655	7.5%	6.3%	5.7%				
JAX	40,833	53,726	31.6%	1.7%	2.0%	13,265	17,968	35.5%	1.6%	1.9%				
WILM NC	33,727	42,175	25.0%	1.4%	1.6%	11,626	16,647	43.2%	1.4%	1.7%				
GULF COAST	438,158	494,661	12.9%	7.9%	7.9%	161,988	184,288	13.8%	8.1%	8.4%				
HOU	290,817	324,386	11.5%	66.4%	65.6%	105,906	120,813	14.1%	65.4%	65.6%				
NEW ORL	45,537	67,794	48.9%	10.4%	13.7%	15,770	25,039	58.8%	9.7%	13.6%				
MOBILE	19,499	18,534	-5.0%	4.5%	3.7%	8,430	7,631	-9.5%	5.2%	4.1%				
TAMPA	13,517	6,927	-48.8%	3.1%	1.4%	3,427	1,327	-61.3%	2.1%	0.7%				

Source for table: March U.S. Port Rankings-Journal of Commerce

Note: Piers numbers for March are 3% below our internal numbers for loaded cargo. This table does not reflect cargo to/from Puerto Rico.

For the Observed Port Range (NFK to MIA)

Imports

Mid & South Atlantic Market Share for Mar. 2010

- Savannah: **+2.3%** from 28.7% in Mar. 2009 to **31.0%** in Mar. 2010
- Charleston: **-1.8%** from 17.7% in Mar. 2009 to **15.9%** in Mar. 2010
- Norfolk: **-0.6%** from 24.1% in Mar. 2009 to **23.5%** in Mar. 2010
- Pt Everglades: **-0.3%** from 10.2% in Mar. 2009 to **9.9%** in Mar. 2010
- Miami: **+0.2%** from 9.2% in Mar. 2009 to **9.4%** in Mar. 2010
- Jacksonville: **-0.1%** from 6.1% in Mar. 2009 to **6.0%** in Mar. 2010
- Wilmington, NC: **+0.4%** from 2.7% in Mar. 2009 to **3.1%** Mar. 2010

Volume Growth

For the observed port range (port range) in Mar 2010, the average growth rate for imports to the port range was up 19%.

Savannah grew the most in absolute terms and was up for the fourth straight month (after fourteen consecutive months of declines), increasing 29% (+18,036 TEUs) overall for March imports. Savannah grew 35% (+12,302 TEUs) with NE Asia (mostly Retail Goods, Furniture, Toys, and Machinery/Appliances/Electronics) and gained 0.8% market share from Norfolk and Charleston. Savannah also was up 25% (+1,750 TEUs) with SE Asia (mostly Furniture), and 43% (+1,277 TEUs) with Southern Asia (mostly Retail Goods and Apparel). Savannah saw more imports via Zim (from NE Asia), CMA CGM (from NE Asia), Yang Ming (from NE Asia), China Shipping (from NE Asia), NYK (from SE Asia), and OOCL (from NE Asia and Southern Asia).

Norfolk increased the second most (in absolute terms) out of the port range and grew 16% (+8,528 TEUs) and increased 16% (+3,130 TEUs) with NE Asia (mostly Furniture), but lost 3% market share to Savannah and Miami. Norfolk also increased 23% (+2,767 TEUs) with North Europe (mostly Beverages and Iron/Steel), 57% (+1,731 TEUs) with SE Asia (mostly Furniture), and 23% (+993 TEUs) with Southern Asia (mostly Chemicals and Paper Waste). Norfolk had increased imports with Yang Ming (from NE Asia), MSC (from NE Asia and North Europe), K Line (from NE Asia), and NYK (from SE Asia).

Miami grew 22% (+4,457 TEUs) and increased 99% (+3,924 TEUs) with NE Asia (mostly Furniture, Machinery/Electronics, and Retail goods). The port increased imports with China Shipping (from NE Asia), Evergreen (from NE Asia), and Maersk (from NE Asia).

Pt. Everglades increased 16% (+3,481 TEUs) and grew 18% (+2,187 TEUs) with Central America (mostly Food – Fruits). The port increased imports with Crowley.

Charleston was up 7% (+2,767 TEUs) and increased 29% (+2,717 TEUs) with NE Asia (mostly Furniture) and 9% (+1,127 TEUs) with North Europe (mostly Automotive). The port had more imports with MSC (from NE Asia and North Europe).

Wilmington, NC increased 42% (+2,413 TEUs) and grew +1,347 TEUs with North Europe (mostly Chemicals and Retail Goods) and had increased imports with Independent Container Line. The port was up 13% (+670 TEUs) with NE Asia (mostly Hardware, Apparel, and Minerals via Yang Ming and Hanjin).

Jacksonville was up 17% (+2,293 TEUs), mostly due to an increase of 62% (-1,091 TEUs) with NE Asia (mostly Retail Goods and Furniture) and had more imports with MOL and Hyundai.

Exports

Mid & South Atlantic Market Share for Mar. 2010

- Savannah: **+0.5%** from 27.4% in Mar. 2009 to **27.9%** in Mar. 2010
- Charleston: **+0.6%** from 13.3% in Mar. 2009 to **13.9%** in Mar. 2010
- Norfolk: **-0.1%** from 20.4% in Mar. 2009 to **20.3%** in Mar. 2010
- Pt Everglades: **-0.6%** from 9.9% in Mar. 2009 to **9.3%** in Mar. 2010
- Miami: **+0.0%** from 10.0% in Mar. 2009 to **10.0%** in Mar. 2010
- Jacksonville: **-0.5%** from 13.2% in Mar. 2009 to **12.7%** in Mar. 2010
- Wilmington, NC: **+0.5%** from 2.0% in Mar. 2009 to **2.5%** in Mar. 2010

Volume Growth

For the sixth straight month (after fifteen months of negative growth), the average rate of growth for exports from the port range was positive, up 21%.

For the sixth straight month, **Savannah** posted double digit growth and was up 23% (+17,559 TEUs), which was the highest growth rate in absolute terms for the port range. Savannah was up 14% (+4,140 TEUs) to NE Asia (mostly Clay and Paper Waste), 34% (+3,678 TEUs) to the Mediterranean (mostly Paper Waste), 36% (+3,007 TEUs) to North Europe (mostly Paper Waste, Chemicals, and Clay), 112% (+2,372 TEUs) to ECSA (mostly Paper Products, Retail Goods, and Minerals), and 14% (+1,032 TEUs) to SE Asia (mostly Food-Poultry). Savannah saw increased exports with CMA CGM (to NE Asia, North Europe, and ECSA), Zim (to NE Asia and the Mediterranean), Yang Ming (to NE Asia), Turkon (to the Mediterranean), Hapag Lloyd (to North Europe), MSC (to North Europe), and NYK (to SE Asia).

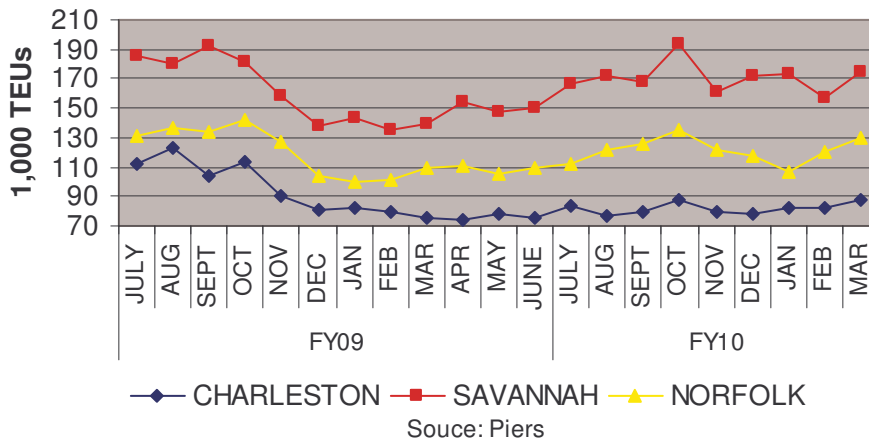
Norfolk grew 21% (+11,661 TEUs) and was up 89% (+4,325 TEUs) with SE Asia (mostly Food-Soybeans), 105% (+2,123 TEUs) with ECSA (mostly Automotive and Minerals), 52% (+1,322 TEUs) with Southern Asia (mostly Food –Grocery Products), and 62% (+1,132 TEUs) with Africa (mostly Food-Grocery Products). Norfolk had increased exports with MSC (to SE Asia and ECSA), Maersk (to SE Asia, Southern Asia, and Africa), and APL (to Southern Asia),

Charleston was up 26% (+9,727 TEUs) and increased 24% (+3,315 TEUs) with North Europe (mostly Retail Goods, Machinery, Automotive, and Chemicals), 103% (+2,183 TEUs) with ECSA (mostly Chemicals), and 70% (+1,371 TEUs) with WCSA (mostly Textiles and Retail Goods). The port had increased exports with MSC (to North Europe and ECSA), Hamburg Sud (to North Europe and South America), and CSAV (to WCSA).

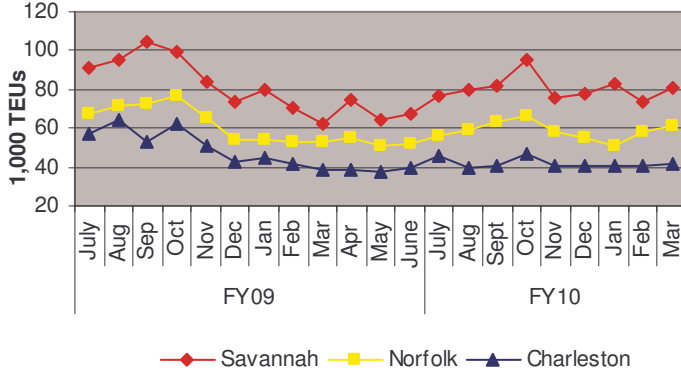
Jacksonville grew 16% (+5,885 TEUs) and was up 11% (+2,982 TEUs) with Puerto Rico (mostly Retail Goods) and 41% (+1,100 TEUs) with ECSA (mostly Retail Goods and Chemicals). The port had increased exports with Trailer Bridge (to Puerto Rico), Sea Star (to Puerto Rico), and Hamburg Sud (to ECSA).

Miami was up 21% (+5,895 TEUs) and grew 24% (+2,314 TEUs) with the Caribbean (mostly Retail Goods and Food-Grocery Products) and 110% (+1,575 TEUs) with ECSA (mostly Food-Grocery Products and Retail Goods). The port had increased exports with Seaboard Marine to these trade regions.

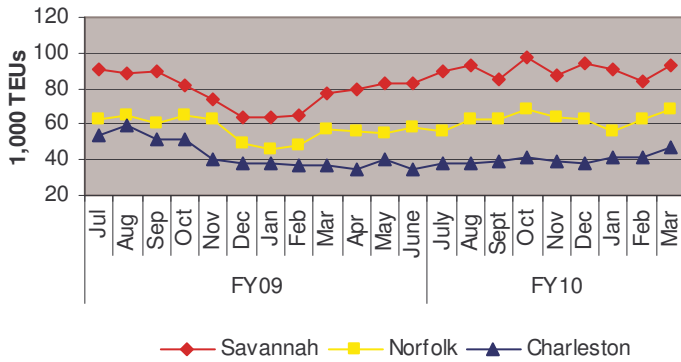
**FY10 TD and FY09 Savannah, Charleston, & Norfolk
Volume Comparison (Total Trade- Loaded Cargo Only)**



FY10TD and FY09 Import Volume for Savannah, Norfolk, & Charleston



FY10TD and FY09 Export Volume for Savannah, Norfolk, & Charleston



Tables: EIS/Avion

For further market information about trade lanes, commodities and carriers' market shares within the competitive port range please see Avion and the Market Share section of EIS (Source: Piers).